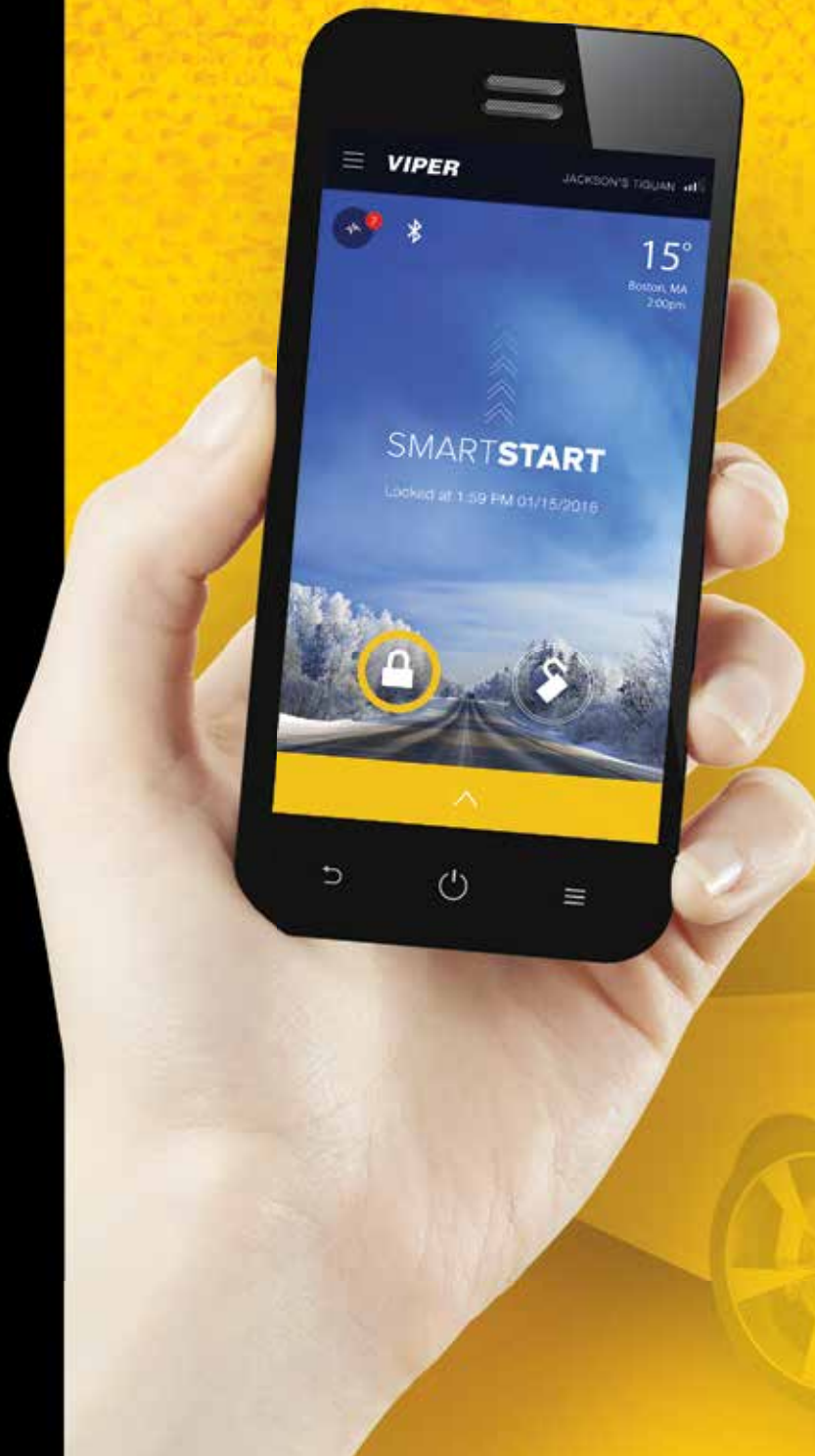


# VIPER®

Product Catalog | 2017



## Ultimate Digital Systems

Security

Remote Start

Convenience Solutions

Connect Your Car!

**NO ONE DARES  
COME CLOSE®**





# CHOOSE YOUR CONTROL

## BEST

### VIPER SMARTSTART

Start, locate or control your car from virtually anywhere with your smartphone.



Even more ways to connect!

Works with Apple Watch and Android Wear smart watches.

Talk or tap to control key functions such as start, lock/unlock, locate or manage alerts.



Available on the following mobile phone platforms.



Apple, the Apple logo, iPod, iPod Touch, Siri, and iTunes are trademarks of Apple Inc. registered in the U.S. and other countries. iPhone is a trademark of Apple Inc. App Store is a service mark of Apple Inc. Android is a trademark of Google Inc. Use of this trademark is subject to Google Permissions.

## BETTER

### OLED 2-Way



Up to **one mile\*** range  
5-button 2-way with OLED command confirmation  
Rechargeable Battery

### LED 2-Way



Up to **one mile\*** range  
1-button 2-way remote start with LED command confirmation

### LCD 2-Way



Up to **one mile\*** range  
5-button 2-way with LCD command confirmation  
Rechargeable Battery

### LED 2-Way



Up to **one mile\*** range  
5-button 2-way with LED command confirmation  
Rechargeable Battery

## GOOD

### LCD 2-Way



Up to 1/4 mile range\*  
4-button 2-way with LCD command confirmation

### 1-Way



Up to 1/2 mile range\* range  
5-button

### 1-Way



Up to 1/4 mile range\*  
1-button remote start

### 1-Way



Up to 1/4 mile range\*  
4-button

## OEM



**3X**  
LOCK  
START

Start your new vehicle using your keyless remote.  
Press the factory remote lock three times (**3X**) to remote start your vehicle.

Choose how you control your system



\* Operating range, based on line-of-sight, unobstructed testing in ideal conditions. Actual range will vary due to local conditions, including but not limited to environment, terrain, physical obstructions, vehicle location and orientation, interference and other possible impediments.

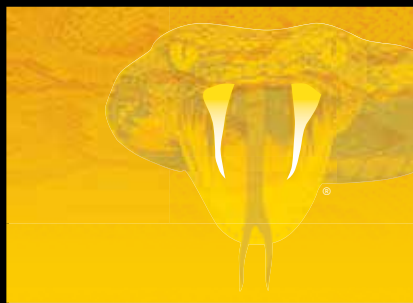
## Introducing The First Rechargeable 2-Way Long-Range LED Remote

- Never buy another battery again.
- Fully Charged in about an hour.
- Charge lasts up to 6 months.



Standard Micro-USB Charging Port





# SMARTSTART SOLUTIONS FOR EVERY CUSTOMER

www.viper.com  
800-876-0800

## VIPER SMARTSTART GPS



VSM350

### Viper SmartStart GPS\*\*\*

Allows you to start, control, and locate your car from virtually anywhere with your smartphone.

### Features\*\*

- Remote Start, Lock/arm & unlock/disarm your car using your smartphone\*\*\*
- Viper Motor Club
- SmartPark
- Car Location
- Social Media Check-in
- Car Status
- SmartFence
- SmartSchedule

### Safety Monitoring\*\*\*:

- Car Speed
- Speed Alerts
- Lockdown Alerts

## VIPER SMARTSTART



VSM300

### Viper SmartStart Module\*\*\*

Add a Viper SmartStart module to any compatible Viper system.

### Features\*\*

- Lock/arm & unlock/disarm your car using your smartphone\*\*\*
- Remote Car Starter
- Trunk Release
- Panic
- Aux Channels Compatible
- Viper Motor Club
- SmartPark
- Car Status
- SmartSchedule

## VIPER SMARTKey



VSK100

### Viper SmartKey

Control your vehicle with the Bluetooth® technology from your smartphone.

### Features\*\*

- Keyless Entry (Passive or Active)
- Can be added to most Viper systems
- Unlocks your doors and disarms the system as you approach your vehicle
- Locks your doors and arms the system as you walk away
- Adds Viper SmartStart control to vehicle

### Applicable Smartphones:



## VIPER SMARTSTART



VSS5X10

### A complete digital remote start and security system\*\*

Viper Digital Remote Start & Security Systems with Viper SmartStart GPS provide a fully integrated single box solution.

### \*\*\* 60 days free Viper SmartStart GPS

### Features\*\*:

- Full security system with siren & shock sensor
- 3x Lock start – use your factory fob to start vehicle
- Featuring advanced multi-bus OBD2 connectivity
- Web-configurable digital module
- Optional RF fob kits available

### Viper SmartStart Features\*\*\*

- Start, lock & unlock your car using your smartphone
- High performance SmartStart module with CDMA 3G technology
- Faster response and broader network coverage
- Receive alerts if alarm is triggered
- Retrieve vehicle status
- Control auxiliary features

## VIPER SMARTSTART



VSS4X10

### A complete digital remote start and keyless entry system\*\*

Viper Digital Remote Start Keyless Entry Systems with Viper SmartStart GPS provide a fully integrated single box solution.

### \*\*\* 60 days free Viper SmartStart GPS

### Features\*\*:

- Keyless entry and trunk release
- 3x Lock start – use your factory fob to start vehicle
- Featuring advanced multi-bus OBD2 connectivity
- Web-configurable digital module
- Optional RF fob kits available

### Viper SmartStart Features\*\*\*

- Start, lock & unlock your car using your smartphone
- High performance SmartStart module with CDMA 3G technology
- Faster response and broader network coverage
- Receive alerts if alarm is triggered
- Retrieve vehicle status
- Control auxiliary features

## Another First From Viper!

### \*\*\* 60 days free Viper SmartStart GPS

Locate your vehicle at the press of a button

Forget where you parked? Get directions using built-in Map page

Lock down your vehicle and get notified if it is moved without your permission

Worried about teen drivers? Receive alerts any time your vehicle exceeds a preset speed limit

SmartFence alerts: Get Out of Bounds notifications if your vehicle goes into or out of specified areas

Want to tell your friends where you're parked? Use one-touch check-in to update your social network

Scheduling feature makes it easy to monitor your vehicle at preset times and days

### \*\*\*Service plan required.

Go to [www.Viper.com/SmartStart/](http://www.Viper.com/SmartStart/) for details on free trial and annual plan features and pricing.  
60 days free Viper SmartStart GPS for VSS4X10 and VSS5X10 only.

\*\* Additional parts and labor may be required.



Download free SmartStart App



Get SmartStart in your car

### Applicable Smartphones:



Set up your SmartStart account

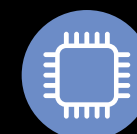
### \*\*\* Service plan required.

Go to [www.Viper.com/SmartStart/](http://www.Viper.com/SmartStart/) for details on free trial and annual plan features and pricing.

Apple, the Apple logo, iPod, iPod Touch, Siri, and iTunes are trademarks of Apple Inc. registered in the U.S. and other countries. iPhone is a trademark of Apple Inc. App Store is a service mark of Apple Inc. Android is a trademark of Google Inc. Use of this trademark is subject to Google Permissions.

Product application and software are subject to change without notice.

## Viper SmartStart Digital Systems: VSS4X10 VSS5X10



Digital System



Integrated Interface



Viper SmartStart GPS



60 Days Free Service\*\*\*





# SECURITY AND REMOTE START SYSTEMS

## VIPER SMARTSTART GPS Security and Remote Start System



Start, lock & unlock your car using your smartphone  
High performance Viper SmartStart with CDMA 3G technology  
Nationwide coverage  
Digital remote engine starter  
Web-configurable digital module  
3X Lock start – use your factory fob to start vehicle  
Locate your vehicle with SmartStart GPS\*\*\*  
Full security system with siren & shock sensor  
Retrieve vehicle status  
Control auxiliary features  
Receive alerts if alarm is triggered

VSS5X10

## OLED 2-Way Security and Remote Start



Up to **one mile\*** range  
Rechargeable battery  
Priority icon map with OLED display  
Stinger® DoubleGuard® Shock Sensor  
Revenger® 6-tone siren  
SuperCode Technology  
Flex relays and light flash  
4 auxiliary channels  
Horn Honk\*\*  
Viper SmartStart compatible  
Separate ESP2 and D2D ports

Analog 5906V

Digital N/A

## LCD 2-Way Security and Remote Start



Up to **one mile\*** range  
Rechargeable battery  
Priority icon map with LCD display  
Stinger® DoubleGuard® Shock Sensor  
Revenger® 6-tone siren  
SuperCode Technology  
Flex relays and light flash  
4 auxiliary channels  
Horn Honk\*\*  
Viper SmartStart compatible  
Separate ESP2 and D2D ports

Analog 5706V

Digital 5710V

## LCD 2-Way Security and Remote Start



Up to 1/4 mile range\*  
Backlit LCD display  
On-screen user interface  
Stinger® Double Guard® Shock Sensor  
Status LED  
Failsafe® Starter Kill  
Revenger® Six-Tone Siren  
On board remote start relays\*\*  
Viper SmartStart compatible  
Separate ESP2 and D2D ports

Analog 5305V

Digital N/A

## LED 2-Way Security and Remote Start



Up to **one mile\*** range  
Rechargeable battery  
Revenger® 6-tone siren  
LED command confirmation  
Stinger® DoubleGuard® Shock Sensor  
Flex relays and light flash  
4 auxiliary channels  
Horn Honk\*\*  
Viper SmartStart compatible  
Separate ESP2 and D2D ports

Analog 5806V

Digital 5810V

## 1-Way Security and Remote Start



Up to 1/2 mile range\*  
4 auxiliary channels  
Revenger® 6-tone siren  
Stinger® DoubleGuard® Shock Sensor  
Comfort Closure\*\*  
Horn Honk\*\*  
Viper SmartStart compatible  
Separate ESP2 and D2D ports

Analog 5606V

Includes one, 1-way remote  
Shown with optional 7656V companion remote



Digital 5610V

## 1-Way Security and Remote Start



Up to 1/4 mile range\*  
Status LED  
Failsafe® Starter Kill  
Stinger® Double Guard® Shock Sensor  
Revenger® Six-Tone Siren  
On board remote start relays  
Viper SmartStart compatible  
Separate ESP2 and D2D ports

Analog 5105V

Includes two, 1-way remote

Digital N/A

## OEM Factory 3X Start and Security



Press the factory remote lock three times (**3X**) to remote start your vehicle.  
Arm and disarm security with factory remote.  
Stinger® Double Guard® Shock Sensor  
Revenger® Six-Tone Siren  
Status LED  
Viper SmartStart compatible

Analog N/A

Digital 5X10

\*\*\*60 days free Viper SmartStart GPS  
Another first from Viper!

Service plan required. Go to [www.Viper.com/SmartStart/](http://www.Viper.com/SmartStart/) for details on free trial and annual plan features and pricing.

\* Range, based on line-of-sight, unobstructed testing in ideal conditions. Actual range will vary due to local conditions, including but not limited to environment, terrain, physical obstructions, vehicle location and orientation, interference and other possible impediments.

\*\* Additional parts and labor may be required.

## Viper Security and Remote Start Systems

Viper Security and Remote Start systems offer the ultimate in vehicle security and convenience! Protect your car and its contents, in addition to starting your car from the comfort of your home or office.

### VIPER SMARTSTART

Add Viper SmartStart to any compatible Viper remote start or security with remote start system.

### VIPER SMARTKey

Use the Bluetooth technology already on your smartphone as a local transmitter or as a standalone keyless entry.

### VIPER SMARTSTART

Start and control your car from virtually anywhere with your smartphone.

### VIPER SMARTSTART GPS

Start, control, and locate your car from virtually anywhere with your smartphone.





# REMOTE START SYSTEMS

<b>VIPER</b> <b>SMARTSTART</b> GPS Digital Remote Start	LCD 2-Way Remote Start / Keyless Entry	LED 2-Way Remote Start / Keyless Entry	LED 2-Way One Button Remote Start	1-Way Remote Start / Keyless Entry	1-Way Remote Start / Keyless Entry	1-Way One Button Remote Start	OEM Factory <b>3X</b> Start
 <p><b>3X LOCK START</b></p>							 <p><b>3X LOCK START</b></p>
<p>Start, lock &amp; unlock your car using your smartphone SmartStart module with CDMA 3G technology Faster response and broader network coverage Digital remote engine starter Keyless entry and trunk release 3X Lock start – use your factory fob to start vehicle Optional RF fob kits available Locate your vehicle with SmartStart GPS***</p>	<p>Up to <b>one mile*</b> range Rechargeable battery Priority icon map with LCD display Flex relays and light flash 4 auxiliary channels Horn Honk** Viper SmartStart compatible Separate ESP2 and D2D ports</p>	<p>Up to <b>one mile*</b> range Rechargeable battery LED command confirmation Flex relays and light flash 4 auxiliary channels Horn Honk** Viper SmartStart compatible Separate ESP2 and D2D ports</p>	<p>Up to <b>one mile*</b> range 2-way confirmation through LED indicators Viper SmartStart compatible Includes 1-way companion remote Separate ESP2 and D2D ports</p>	<p>Up to 1/2 mile range* 4 auxiliary channels Comfort Closure** Horn Honk** Viper SmartStart compatible Separate ESP2 and D2D ports</p>	<p>Up to 1/4 mile range* Superhet receiver for great range Unlock, lock and remote start Viper SmartStart compatible (4105V only) Separate ESP2 and D2D ports (4105V only)</p>	<p>Up to 1/4 mile range* Superhet receiver for great range Unlock and remote start Viper SmartStart compatible (4115V only) Separate ESP2 and D2D ports (4115V only)</p>	<p>Press the factory remote lock three times (<b>3X</b>) to remote start their vehicles. Viper SmartStart compatible</p>
<p>VSS4X10</p>	<p>Analog 4706V</p>	<p>Analog 4806V</p>	<p>Analog 4816V</p>	<p>Analog 4606V Includes one, 1-way remote Shown with optional 7656V companion remote </p>	<p>Analog 4105V</p>	<p>Analog 4115V</p>	<p>Analog N/A</p>
<p>Digital 4710V</p>	<p>Digital 4810V</p>	<p>Digital 4811V</p>	<p>Digital 4110V</p>	<p>Digital 4112V</p>	<p>Digital 4X10</p>	<p>Digital 4X10</p>	<p>Digital 4X10</p>

\*\*\*60 days free Viper SmartStart GPS  
Another first from Viper!

Service plan required. Go to [www.Viper.com/SmartStart/](http://www.Viper.com/SmartStart/) for details on free trial and annual plan features and pricing.

\* Range, based on line-of-sight, unobstructed testing in ideal conditions. Actual range will vary due to local conditions, including but not limited to environment, terrain, physical obstructions, vehicle location and orientation, interference and other possible impediments.

\*\* Additional parts and labor may be required.

## Viper Remote Start Systems

Viper Remote Start systems offer the ultimate in vehicle convenience! Start your car from your remote from the comfort of your home or office. Warm up your car in the Winter, and cool it off in the Summer.

### VIPER SMARTSTART

Add Viper SmartStart to any compatible Viper remote start or security with remote start system.

### VIPER SMARTKey

Use the Bluetooth technology already on your smartphone as a local transmitter or as a standalone keyless entry.

### VIPER SMARTSTART

Start and control your car from virtually anywhere with your smartphone.

### VIPER SMARTSTART GPS

Start, control, and locate your car from virtually anywhere with your smartphone.



# SECURITY SYSTEMS



## 1-Way Security System



- Up to 1/2 mile range\*
- Onboard door lock relays
- Flex relays and light flash
- 4 auxiliary channels
- Horn Honk\*\*
- Separate ESP2 and D2D ports
- Viper SmartStart compatible

### Analog 3606V

Includes one, 1-way remote  
Shown with optional 7656V companion remote



## LCD 2-Way Responder Security System



- Up to 1/4 mile range\*
- 3-channel security and keyless entry system
- Clone-Safe® Code-Hopping®
- 2 auxiliary outputs
- Comfort Closure\*\*
- Viper SmartStart compatible

### Analog 3305V

## 1-Way Security System



- Up to 1/4 mile range\*
- 3-channel security and keyless entry system
- Clone-Safe® Code-Hopping®
- Comfort Closure\*\*
- 2 auxiliary outputs
- Viper SmartStart compatible

### Analog 3105V

## KEYLESS ENTRY

## 1-Way Keyless Entry System



- Up to 1/4 mile range\*
- Includes two 4-button remotes
- Ignition-controlled door locks
- Panic/car locator\*\*
- Interior light illumination\*\*
- Comfort Closure\*\*
- 2 auxiliary outputs
- 2nd Unlock output\*\*

### 412V

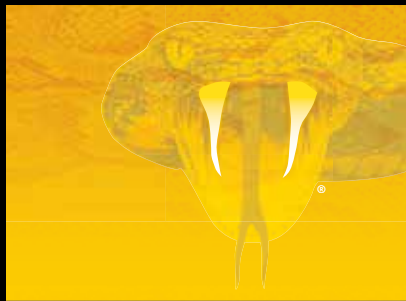
\* Range, based on line-of-sight, unobstructed testing in ideal conditions. Actual range will vary due to local conditions, including but not limited to environment, terrain, physical obstructions, vehicle location and orientation, interference and other possible impediments.

\*\* Additional parts and labor may be required.

## Viper Security Systems

Over 1 million vehicles will be stolen this year. Don't be a statistic. Factory security is just not enough. Viper Security systems offer the ultimate in vehicle security! Protect your car and its contents.





# ACCESSORY PACKAGES

## CONQUER THEFT!

Fight back against car thieves and vandals with these five powerful layers of protection!

### THE MAXIMUM SECURITY PACKAGE



### The Convertible and Jeep Package



Surround your vehicle with an invisible sensing field that can trigger your siren before thieves even touch it!

- Back-up Battery Siren ( PN 515R )
- Field Disturbance Sensor ( PN 508D )
- Mini Piezo Siren ( PN 513T )
- Ball Bearing Tilt Switch ( PN 8613 )

### Smash and Grab Package



Protect your vehicle and its contents with an electronic sensor that's always on guard!

- Back-up Battery ( PN 520T )
- Audio Sensor ( PN 509U )
- Backup Battery Siren ( PN 515R )
- Digital Tilt Motion Sensor ( PN 507M )
- Ball Bearing Tilt Switch ( PN 8613 )

### Rims and Tires Package



Protect those expensive wheels with a sophisticated sensor that detects towing and jacking.

- Digital Tilt Motion Sensor ( PN 507M )
- Ball Bearing Tilt Switch ( PN 8613 )

### Window Automation Package



Roll up your windows automatically every time you arm your alarm!

- Window Automation System ( PN 535T )

### Do you have a False Sense of Security?

You may think your vehicle already has an alarm that will protect it and its contents from being stolen ... but you're probably wrong! To find out, take this simple test. Roll down your window and arm your system. Reach in and open your door. No sound? That means you have a False Sense of Security!

#### The Maximum Security Package

- |   |   |
|---|---|
| Digital Tilt/Motion Sensor<br>Part No. 507M | Ball Bearing Tilt Switch<br>Part No. 8613 |
| Backup Battery Siren<br>Part No. 515R       | Backup Battery<br>Part No. 520T           |
| Audio Sensor<br>Part No. 509U               |   |

#### The Convertible and Jeep Package

- |   |   |
|---|---|
| Backup Battery Siren<br>Part No. 515R     | Mini Piezo Siren<br>Part No. 513T         |
| Field Disturbance Sensor<br>Part No. 508D | Ball Bearing Tilt Switch<br>Part No. 8613 |

#### Smash and Grab Package

- |   |                                 |
|---|---------------------------------|
| Backup Battery Siren<br>Part No. 515R       | Backup Battery<br>Part No. 520T |
| Digital Tilt/Motion Sensor<br>Part No. 507M | Audio Sensor<br>Part No. 509U   |
| Ball Bearing Tilt Switch<br>Part No. 8613   |                                 |

#### Rims and Tires Package

- |   |   |
|---|---|
| Digital Tilt/Motion Sensor<br>Part No. 507M | Ball Bearing Tilt Switch<br>Part No. 8613 |
|---|---|

#### Window Automation Package

- |   |
|---|
| Window Automation System<br>Part No. 535T |
|---|





# WINDOW FILM

www.viper.com  
800-876-0800

## Why Viper Window Film?

Because our customers asked us for it! For nearly 30 years, Viper has protected millions of consumers from thieves. When we asked our key partners what we could do to continue building our business together, we received a resounding recommendation to launch a window film line deserving of the Viper brand. A high-quality film that enhances security by strengthening a vehicle's windows and contains no metal so that it doesn't degrade in-vehicle wireless signals including all Directed security/remote start systems or any other aftermarket device. Viper Films block nearly 100% of UV rays which reduces glare and protects passenger and the interior of the vehicle, while adding a sophisticated look to your ride.

## Guaranteed for life from fading, shrinking, and peeling.

Viper Window Films block nearly 100% of UV rays, reducing glare and protecting you and the interior of your vehicle, while adding a sophisticated look to your ride.



### STYLE SERIES™ FILM

A cost-effective solution for reducing the temperature of your vehicle's interior. Viper Style Film provides standard UV protection and is offered in a full range of shades to compliment the look of your vehicle.

Visual Light Transmission options:

5% 20% 35% 50%



### PURE SERIES™ FILM

A high performance and quality solution for temperature reduction of your vehicle's interior. Viper Pure Film delivers purity of color and materials in a complete range of shades to upgrade the look of your vehicle.

Visual Light Transmission options:

5% 20% 35% 50%



### PURE CHARCOAL SERIES™ FILM

Much richer in color than the Pure Series, Viper Pure Charcoal Film provides the same great temperature reduction, and comes in a wide selection of shades to protect your vehicle's interior.

Visual Light Transmission options:

5% 15% 35% 40% 50%



### PURE IR SERIES™ FILM

Sets the standard in infrared heat protection and offers superior heat reduction and personal comfort. Viper Pure IR Film provides purity of color and materials, as well as a variety of shades to suit your vehicle.

Visual Light Transmission options:

5% 15% 35% 40% 50% 80%



NEW SELECTIONS

[www.viper.com](http://www.viper.com)

For the most up to date information on Viper film or any of our Viper security and remote start products, visit us on the web at [www.viper.com](http://www.viper.com).





**VIPER**<sup>®</sup>



***NO ONE DARES COME CLOSE***<sup>™</sup>

Main Toll Free - 800.876.0800

Online Order and Warranty Processing - [www.directeddealers.com](http://www.directeddealers.com)

Online Technical Support - [www.directechs.com](http://www.directechs.com)

**DIRECTED**<sup>®</sup>